


FOREST PRODUCTS NEWS

LePage Wins, Forest Products Industry Optimistic

*By Patrick Strauch
MFPC Executive Director*

 After a stressful election night, Waterville Mayor Paul LePage was officially announced the winner of Maine's 2010 gubernatorial election on November 3rd. LePage, a conservative Republican, is set to become Maine's first Republican Governor since the mid 1990's.

LePage beat Eliot Cutler, an Independent, by roughly 2% points (~38% to ~36%.) Cutler conceded around noon on Wednesday, November 3, after a long night where the numbers were too close to call.

LePage has been a strong advocate for the forest products and other natural resource industries

throughout the campaign. He has experience as a financial advisor with many current and former Maine manufacturing companies.



MFPC has been working diligently in recent weeks to make sure that the industry has the opportunity to help with the transition from the Baldacci Administration to the LePage

Administration. Many supporters and members have submitted their names as

willing advisors to the transition team. The LePage transition team has constructed a very transparent process for the recruitment of a new team, which you can find at www.lepagetransition.com.

We have also been working closely with the Natural Resources Network, which will serve to compliment our individual efforts, and hopefully strengthen the voice of traditional natural resource industries here in Maine.

If you are interested in serving, or would like more information, please contact Patrick Strauch or James Cote.

Raye and Nutting Chosen as President and Speaker

Senator Kevin Raye of Washington County, a strong advocate for Maine's forest products industry, and good friend of the Maine Forest Products Council has been selected by his caucus as the next Senate President. The formal election will happen later in December, however, after the Republicans gained control of the State Senate on November 2, his election as President is now almost assured.



Senator Raye was selected by his colleagues to be the Republican Leader in the Senate. He is a member of the Maine Citizen Trade Policy Commission. He formerly served on the Agriculture, Conservation and Forestry Committee and was the lead Republican in the 123rd legislature on the Health and Human Services Committee. He has focused much of his work in the Senate on fighting for equity for rural

IN THE NEWS



- P&C Austin Wilkins Award. . . . Page 3
- Switzerland Trip. Page 3
- Landowner Relations Conference. . Page 4
- MFPC Legislative Breakfast Page 4
- Statewide Landowner Appreciation Page 5
- Dear Task Force meeting. Page 6
- Adopt - A- Legislator. Page 7
- Maine SFI. Page 8

education, fiscally responsible state budgeting, and efforts to strengthen the economy of Down East Maine.

A small businessman, he and his wife Karen co-own and operate Raye's Mustard Mill, in Eastport, as well as their own consulting business. Previously, from 1983 to 2001, he worked

Robert Nutting of Oakland, Nutting was nominated on the fourth ballot.

Representative Bob Nutting is serving his fifth term in the Maine House of Representatives, returning after a two-year absence. He represents District 78, which includes Sidney and part of Oakland.

Rep. Nutting is a licensed pharmacist, with a degree from the Massachusetts College of Pharmacy, and has been practicing since 1970. Bob served on the Oakland Town Council from 1977 to 1988. He lists his hobbies as hunting, golf and gardening.

Rep. Nutting and his wife, Wendy, have three grown children and five grandchildren.

House Republicans also bolstered their number by a seat Friday, as Rep. Michael Willette of Presque Isle changed his party affiliation from Democrat to Republican. Maine's House of Representatives now has 78 Republicans, 72 Democrats and one independent.

The full House will formally elect a new speaker after newly elected representatives are sworn in Dec. 1.

**SAVE THE DATE:
RANGELEY CHOSEN
AS LOCATION FOR
2011 MFPC
ANNUAL MEETING**

**The meeting will be at the
Saddleback Ski Area in
Rangeley, Maine on
September 11-12**



for U.S. Sen. Olympia Snowe (R-Maine). Most of that time, he served as Snowe's top aide in Maine, and then for 6½ years, was her Chief of Staff in the U.S. Senate. He led her staff in Maine and Washington, including her staff on the Senate committees on which she served: the Armed Services, Budget, Commerce, Finance, Foreign Relations and Small Business Committees.

The new speaker of Maine's House of Representatives will be Representative Robert Nutting.

Maine House Republicans for the first time in three decades have nominated a party member who's assured of serving as speaker for the upcoming legislative session.

A five-way race for speaker was trimmed to four contestants as voting got under way Friday afternoon in the State House. After a tie between Reps. Paul Davis of Sangerville and

Maine Forest Products Council
535 Civic Center Drive
Augusta, Maine 04330
(207) 622-9288
FAX (207) 626-3002
www.maineforest.org

2009-2010 Council Officers

President: Don White
First Vice President: Dwain Allen
Second Vice President: Mark Doty
Secretary: James Contino
Treasurer: John Gray

Executive Committee Members:

Peter Triandafillou
John Gray
Steve Schley
Steve Coleman
Jim Robbins
Richard Robertson

Executive Director: Patrick Strauch
pstrauch@maineforest.org

SFI Director: Patrick Sirois
psirois@maineforest.org

Communications Coord.: James Cote
jcote@maineforest.org

Office Manager / Administrative Assistant:
Sue McCarthy smccarthy@maineforest.org

Forest Products News is published for members of the Maine Forest Products Council, a not-for-profit association of landowners, loggers, foresters, truckers, wood processors and forest products service firms.

Articles appearing in this newsletter may be reproduced without permission. Credit is appreciated. Editorial submissions and suggestions are encouraged.

The Maine Forest Products Council is a proud supporter of:





Don White
of Prentiss
and Carlisle is
the new
MFPC
President

Prentiss & Carlisle Re- ceives Austin Wilkins Award

Prentiss & Carlisle, a Bangor-based company that manages more than 1 million acres of Maine timberland, was recognized Thursday with the state's highest award for forest stewardship.

Founded in 1924, Prentiss & Carlisle owns more than 100,000 acres of forestland and manages an additional 1 million acres, making it one of Maine's largest land management firms. Don White of Prentiss and Carlisle now serves as President of the Maine Forest Products Council.

Presenting the Austin Wilkins Forest Stewardship Award during a ceremony at the Blaine House, Gov. John Baldacci praised the 86-year-old company's longstanding commitment to Maine's timber industry.

"Without fanfare, Prentiss & Carlisle has certified nearly 750,000 acres of Maine land to Forest Stewardship Council standards," Baldacci said, referring to one of the nation's two leading certification programs for sustainable forestry. "Congratulations. What an accomplishment."

Established in 2004, the Austin Wilkins Forest Stewardship Award is given annually to individuals or organizations credited with managing Maine's working forests in a sustainable and exemplary way.

The award's namesake is a former state forestry commissioner who served 13 governors during his nearly 45-year career with the Maine Forest Service. Wilkins was an active member of the Maine Forest Products Council. He died in 2002.

Award recipients are selected by the Maine Department of Conservation and the Maine TREE Foundation.

Prentiss & Carlisle chairman David Carlisle, said credit for the company's success and the award presented Thursday should truly go to the company's clients and foresters. He told Kevin Miller of the Bangor Daily News:

"It's easy for us to sit in a place like this and talk [about forestry] ... but it really takes the guy on the ground, the forester, to get the job done,"

The Maine Forest Products Council members and staff send our congratulations to Prentiss and Carlisle for this outstanding recognition.



Trip to Switzerland Opens Eyes to World Class Economy

By James Cote

Switzerland means business. Literally.

Recently I had a wonderful opportunity to travel to Switzerland with the American Swiss Foundation and attend an annual Young Leaders Conference. The conference invites twenty five American young leaders, ages 50 and younger to travel to a location in Switzerland and meet with twenty five Swiss leaders in an

effort to strengthen the cultural and economic ties between the so called "sister Republics".

The background of the U.S. participant's ranges from state legislators to CEO's of biochemical companies to high profile media personalities. The background of Swiss participants ranges from members of Swiss government, to lawyers, accountants, media, and of course, bankers.

For an entire week participants engage in intense discussion and educational exercises about government, politics, religion, natural resources, labor, trade, and finance. We had the opportunity to visit with the U.S. Ambassador to Switzerland, Donald Beyers, at his personal residence in Bern, Switzerland's capitol city. We also engaged in discussion with UBS' chief legal counsel, Markus Diethelm, and the vice chairman of the Swiss National Bank, as well as tour a number of global economic power houses, such as Novartis, one of the world's largest pharmaceutical companies based in Basel.

As a country, Switzerland is geographically very small, just a bit larger than half of Maine, and they have a population roughly eight times ours, hovering somewhere around 8 million.

Of course, a major theme this year was learning about the Swiss banking system as it exists after the financial meltdown of the past couple of years, and the new U.S. regulation the Swiss banking community is now

(Continued on page 7)

SAM and SWOAM to Host Landowner Relations Conference

On December 9, the Small Woodland Owners Association of Maine and the Sportsman's Alliance of Maine will be hosting a landowner relations conference with the goal of establishing pilot projects to bring successful programs to reality in addressing Maine's landowner relations issues. George Smith and Tom Doak will bring attendees up to date on grants received to help with these efforts.

The keynote address will be given by Jessica Leahy. Jessica is an Assistant Professor in the School of Forest Resources at the University of Maine. She is also a Program Leader of the Family Forest Research Unit at the Center for Research on Sustainable Forests.

Her research is largely focused on environmental attitudes and behaviors of family forest landowners and recreation users using social psychology and communication theories. On December 9, she will discuss:

What do landowners desire in exchange for providing access? Is it respect? Money? Help with illegally dumped tires? Something else? Professor Leahy will share results from a series of social science research studies that have examined landowner relations and recreation access in Maine. The most recent study investigated landowner incentive preferences through focus groups and a state-wide mail survey of landowners.

Governor-Elect Paul LePage has also been invited to attend during lunch.

For more information, please contact James Cote at MFPC.

MFPC Calendar:

- November 18- Manufacturing Committee Meeting
- December 2- Conservation- Recreation Forum
- December 3- Northern and Eastern Maine Deer Task Force Annual Meeting
- December 9- SAM and SWOAM Host Landowner Relations Conference
- December 14- Landowner-Sportsmen Relations Advisory Board Meeting

LandVest®

SERVING TIMBERLAND INVESTORS SINCE 1968

Full Service Forestry Consulting
Across New England, New York and Pennsylvania

Timberland Marketing and Investment Analysis Services
Provided throughout the U.S. and Canada

**Foresters and Licensed Real Estate Professionals
in 13 Regional Offices:**

Bangor, ME (207) 947-2800	Lowville, NY (315) 376-2832
Bethel, ME (207) 836-2076	Tupper Lake, NY (518) 359-2385
Clayton Lake, ME (603) 466-7374	Concord, NH (603) 228-2020
Jackman, ME (207) 668-7777	W. Stewartstown, NH 603-246-8800
Portland, ME (207) 774-8518	St. Marys, PA (814) 781-1637
St. Aurélie, ME (418) 593-3426	Newport, VT (802) 334-8402
	Americus, GA (229) 924-8400

www.landvest.com

Stewardship For Your Timberland Investment

MFPC Legislative Breakfast Series Once Again a Hit

The annual fall legislative breakfast series was once again a hit this year among members and legislative candidates. Patrick Strauch and James Cote traveled to several regions in the state to talk to members and candidates about the status of Maine's forest products industry and forest policy.

The breakfasts were held in Farmington, Bangor, Gray, and Millinocket. A breakfast in northern Maine will be held later this winter.

We would also like to again thank our sponsors:

Plum Creek Timber Company
Huber Resources
Katahdin Forest Management
Prentiss & Carlisle
Verso
Limington Lumber
Hancock Lumber
LaValley Lumber
The Fontaine Group

First Statewide Landowner Appreciation Day a Big Success

AUGUSTA, Maine – It took a lot of hard work by a lot of dedicated people, but the final tally shows it was all worth it.

Local ATV and snowmobile clubs, land trusts, community groups including Boy Scouts, and local municipalities hauled away a total of 46 tons of material, including 30 tons of trash, discarded furniture and appliances, during last month's Landowner Appreciation Day, held Saturday, Sept. 25, according to the clean-up organizer. A total of 1,418 tires, including a least nine truck-sized tires, which equal an additional 16 tons, also were removed during the clean-up day.

"I'd say the clean-up day was highly successful because of the number of volunteers who participated and the amount of materials picked up," Bob Duplessie, Landowner Relations (LOR) Program director, said.

"It's important for us to say 'thank you' to Maine landowners," Dan Scott, Maine Department of Inland Fisheries and Wildlife game warden captain and LOR coordinator, said. "More than 90 percent of Maine is privately owned, and we rely on the generosity of private landowners to keep their land open for public access. The Landowner Appreciation Day was an excellent opportunity for user groups and communities alike to tell private landowners, 'We appreciate what you do.'"

The day-long event – the first to be held by the state program – involved 152 people working at 55 sites, owned by 24 different landowners in 12 towns around the state, Duplessie said. The crews – many who went beyond what was expected of them – donated a total of 510 hours of their time, he said.

After the event, two landowners joined their local ATV clubs "because they were so impressed by what the clubs had done, the initiative to clean up someone else's land," Duplessie reported. Some community groups even turned the occasion in a social event, rewarding themselves with a picnic barbeque, and of course, cleaning up after themselves, Duplessie noted. In Limington, the barbeque was done by the local ATV club; in Standish, the local Kiwanis Club hosted the outdoor feed; and in Hampden, the town sponsored the barbeque.

The Landowners Relations Program is a joint program operated by the Maine Department of Conservation (MDOC) and the Department of Inland Fisheries & Wildlife (DIF&W) designed to help the relationship

between private landowners and recreation groups. As LOR program director, Duplessie is responsible for coordinating efforts with the state's natural resource agencies, other governmental agencies, landowners, and other interested groups, to ensure that the tradition of appropriate public use of public and private lands continues.

The issue of trash dumping on private property is one that has arisen numerous times in discussions held by the Governor's Landowner and Sportsman Relations Advisory Committee, Duplessie said. The clean-up project was designed to help maintain the positive relationship between landowners and recreationalists with an eye to keeping access to private land, he said.

In addition to the local groups, MDOC and MDIF&W, the Maine State Planning Office, The Nature Conservancy, Central Maine Power Co. and Small Woodland Owners Association of Maine supported the clean-up, Duplessie said.


Volunteer teams from ATV, snowmobile, and sportsman clubs, plus land trusts and municipalities did the work, Duplessie said. A small grant from the Maine Outdoor Heritage Fund helped with some of the costs.

The communities involved were: Limington; Hampden; Orono; Veazie; Old Town; Sebago, Standish; South Portland; Oxford; Waterboro; Waterford; and Winslow.

The crews found the usual stuff that one unfortunately sees at those obscure dump sites – mattresses, lots of trash, old clothing and household junk. Some of the more unusual items hauled away were: an old swimming pool with a heater and sand filter; old toilets; bait bags, netting and marine debris; and a freezer full of old food. Most of the clean-up occurred not on trails, but along road-accessible land, where it was obvious that illegal dumpers just unloaded their trucks, Duplessie said. Access to these areas by large vehicles has been reduced in some of the areas with the construction of built-up berms, but no recreational trails were blocked, "In many places, access has been eliminated to large vehicles – that was the root cause of the dumping," Duplessie said.

In Limington, the town also posted prominent signs warning violators that "We Will Prosecute," Duplessie said. He added that the trash is being examined to identify dumpers. "When we identify dumpers, we will prosecute," he said.

(Continued on page 6)



Think of us as your natural resource

AT BERRY DUNN, WE DO IT RIGHT. With vibrant entrepreneurial spirit, deep resources, seasoned judgment, and Maine roots. Our experts understand the complex issues that drive today's business in the region—and around the world. We're fully engaged, responsive, and ahead of the curve.

The result? State-of-the-art audit and accounting, tax, information technology, and business consulting services.

Choose the right team. Choose Berry Dunn.

BERRY.DUNN.MCNEIL & PARKER
BIDMP
 Bangor | Portland | Manchester | bdmp.com

LEARN MORE.
 Call 207 942-1600
 or visit bdmp.com.

Deer Task Force to Meet in December

On December 3, the second annual meeting of the Northern and Eastern Deer Task Force will convene at the DIFW Regional Office in Sidney.

As you may recall, the Task Force was created by IFW Commissioner Martin a few years ago as a way to publicly address the declining deer population with stakeholders. MFPC has been actively engaged during the process, and last year, formally endorsed a set of deer wintering area management guidelines with SWOAM and DIFW. Several MFPC members have incorporated the guidelines into their deer habitat management strategy, and according to the Department, they are seeing good cooperation and better communication between many landowners and regional biologists.

The December 3 meeting will be a vehicle for more discussions on deer issues, as well as the opportunity to review progress by all parties over the course of the last year.

On the agenda tentatively are discussions on the Natural Resources Protection Act, Site Location Law, wildlife mapping activities, a review of management guidelines progress, and the development of a species planning group.

To refresh your memory of the accomplishments and recommendations of the Northern and Eastern Maine Deer Task Force, follow this link: http://www.maine.gov/ifw/wildlife/surveys_reports/pdfs/ne_deerreport.pdf

You may desire to review the recommendations of the Deer Predation Working Group. The full report can be found at: http://www.maine.gov/ifw/wildlife/surveys_reports/pdfs/deerpredationreport.pdf

The meeting is open to the public. The meeting will begin at 10:00 a.m. and end prior to 3:00 p.m. A bag lunch is recommended. If you need any other information, please feel free to contact James Cote at jcote@maineforest.org or 622-9288.

Landowner Appreciation Day. (Cont. from page 5)

The clean-up has made some dramatic differences in these areas, and Duplessie has a whole album of before-and-after shots to prove it. Where there once were discarded sofas and mattresses, there now are pristine wooded areas. "The clubs that use people's land on which to recreate really appreciate having access to the property, enough to take care of it, and they wanted to show the landowners their appreciation for the use," Duplessie said. "I'm very pleased with the outcome, but it also proves to me that dumping is a major societal problem. I hope that an effort like this will have some educational value."

The LOR director thanked everyone who participated and said he planned on holding the event again next year. "Hopefully, next year when we do a coordinated clean-up day, we won't have to do it on those same areas," he said. For more information about the Landowner Relations Program, go to: <http://www.maine.gov/lor>



We understand your industry.
We're dedicated to your success.

Providing financing for...

- ▶ forest products
- ▶ agriculture & food
- ▶ commercial fishing & seafood
- ▶ rural property



Auburn | **800.831.4230**
Presque Isle | **800.831.4640**
farmcreditmaine.com



Proud member of the Farm Credit System

Adopt-A- Legislator Plan Being Developed

Election season is now over and that means it is time for members of the Maine Forest Products Council to engage, or reengage their elected officials on issues facing Maine's forest products industry.

In an effort to be as organized and efficient as possible, James Cote and Patrick Strauch of MFPC will be developing an "Adopt- A- Legislator" Plan to assist members with their outreach.

It will be essential to reach out to as many legislators, especially freshmen, as possible. A great way to do this will be for companies to invite legislators for a tour of their facility or forestland. It will also be important that MFPC follow up with members in order to gauge the level of interaction among the industry and elected officials.

More information will be made available in coming weeks. For more information, please contact James Cote.

Switzerland..... (Cont. from page 5)

subject to. This is certainly a complex relationship, and without going into detail, a relationship we would be wise to pay more attention to.

However, it wasn't just banking that dominated our discussions. It was interesting to learn that their unemployment rates are well less than half of what ours is in Maine, their health care system is one of the best crafted in the world, immigration is becoming an enormous problem, their transportation system is very efficient, and the power of their government still fortunately resides close to the people, at the canton (or state) level.

It was also interesting to reflect on the dynamics between the economy and the environment. Beautiful hillsides, forests, rivers, and fields are neighbored by healthy industrial complexes, development, and yes, even hydropower dams and nuclear power plants. I applaud the Swiss' ability to successfully balance both their economic health as well as their environmental stewardship in such high regard.

What may have surprised me most however, was the Swiss people's fortitude in the face of this global economic adversity.

Anne-Marie Slaughter, a White House economic policy advisor recently said, "In a networked world, the issue is no longer relative power, but centrality in an increasingly dense global web". Switzerland, it seems, is campaigning actively for a position in the heart of our global economy, with the people, the know-how, and the attitude that may just get them there.

So what was the take away of an experience like this?

Switzerland is not the same mysterious place as is portrayed in James Bond movies. It isn't just chocolates, watches, and alpine skiing. The Swiss people are sharp, well informed, and are paying very close attention to what the rest of the world is doing. They are an economic engine well placed geographically and politically for the future economy.

Switzerland is open for business. We here in the United States, and especially Maine, could learn a lesson from our friends across the pond.

SFI & MSA team up to protect water quality

SFI participants man a booth at the MSA show, highlighting a newly formed partnership aimed at improving practices to protect water quality. Snowmobile trails and associated stream crossings share the exact same physical characteristics as forest management stream crossings. This new partnership will leverage SFI's experience in training forest practitioners by offering training to snowmobile club members that are responsible for the construction and maintenance of trails and crossings.

A thumbnail seminar of the upcoming training programs was presented by John Starrett of Sappi Fine Papers. From left to right, Mark Doty, (ME SFI Chair, Plum Creek), Gordon Gamble (Public Outreach Chair, Wagner Forest Management), John Starrett (SFI Education Chair, Sappi) and Bob Meyers (MSA Executive Director)



Complete timberland investment services with one call

Acquisition Due Diligence

Forestland Appraisals

Land Brokerage

Timber Inventory

Certified Forestry

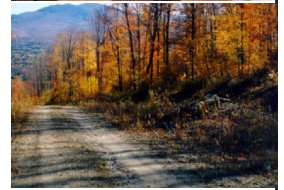
GIS Data & Analysis

fountains

www.fountainsamerica.com

Serving Maine, New Hampshire, Vermont,
New York and Appalachia

1-866-348-4010



FSC® C019317