

FOREST PRODUCTS NEWS

LePage Recruits Beardsley to Head DOC

By Patrick Strauch
MFPC Executive Director



On December 16, 2010, Governor-Elect LePage announced that he would appoint William “Bill” Beardsley as the Commissioner of the Maine Department of Conservation. Beardsley is a close ally of Maine’s forest products industry and championed many of our issues throughout his campaign for governor in Maine’s Republican Primary Election early in 2010.

Since that time, MFPC has met with Beardsley on several occasions and we are confident that he will do a tremendous job as Commissioner.

Pictured below: Bill Beardsley visits Pleasant River Lumber with Chris and Luke Brochu



Recently, MFPC commented on the

appointment:

“Bill Beardsley is extremely knowledgeable about the issues facing Maine’s forests and forest products industry,” said Patrick Strauch, Executive Director of the Maine Forest Products Council. “Bill understands that Maine’s forest products industry is poised for success in a new global market, and has the passion and expertise to help us reach our goal of creating the healthiest forest products industry in the country.”

(Continued on page 2)

LURC Announces New Expedited Permitting Process for Residential Development

The following text is derived from a Land Use Regulation Commission (LURC) media advisory which was distributed on December 21, 2010. MFPC believes that it is important for members to be aware of these issues as we approach the Legislature in coming weeks about ways to improve and reform LURC.

AUGUSTA, ME – People applying for a residential building permit in the Maine Land Use Regulation Commission’s jurisdiction now are guaranteed that they will get a decision within 10 working days if

they submit a complete application, according to LURC officials.

As of Monday, Jan. 3, 2011, applicants will be able to use LURC’s new “Expedited Residential Building Permit Application.” If they submit a complete application and don’t get a decision or response from the agency within the 10-working-day period, LURC will refund applicants their entire permit application fee.

The guarantee and expanded process are being established in response to recent public concerns about the waiting periods regarding all regulatory proce-

(Continued on page 3)

IN THE NEWS



LePage Recruits Beardsley.	Page 1
LURC	Page 1
Legislative Comm. Assignments.	Page 4
Senator Collins	Page 9
Cote Moves On	Page 10

LePage. (Cont. from page 1)

“This appointment only underscores the commitment from Governor-Elect LePage to help us strengthen our industry,” said Don White, current President of the Maine Forest Products Council and Prentiss & Carlisle. “Bill understands well the importance of forest products to Maine’s economy and environment, and the role it will have in growing jobs in our rural communities. We look forward to working with Bill in coming years on issues dealing with forest management, conservation, and land use.”

Natural Resources are in the Beardsley family DNA. His ancestors owned timber limits and operated sawmills in Hancock County shortly after the Civil War. Bill’s dad headed a paper mill and hydro company in Newfoundland. His son is involved in the logging industry in Maine. Bill’s doctoral dissertation related to resolving multiple use forest resource management and he has spent much of his life enjoying, studying and advocating for Maine’s natural treasures.

Beardsley has a reputation of being a professional with many talents. His experience includes:

Employment

1987-2010, President & CEO and Board Member, Husson College/ University

1985-1986, commercial real estate and branch manager, Bar Harbor Banking and Trust

1982-1985, Alaska Department of Community and Economic Development: Director of

Divisions of Energy and Power Dev., Finance and Economics, Office of Forest Products

1981-1982, Center for Entrepreneurial Development (exec. director) and associate professor of natural resources development, Alaska Pacific University

1976-1981, Bangor Hydro Electric Company, vice president and assistant to the president

1973-1976, Green Mountain Power Corp., assistant to the president

1970-1972, Office of Governor Deane Davis (VT), aide to governor and state planner

1969-1970, UVM, assistant to the dean of agriculture, asst. prof. of economic geography

Activities (sample)

- FAME (past chair and board member representing natural resources and education sectors)
- Maine Development Foundation (past chair and member of the board)
- ME Higher Ed. Council and ME Independent College Assn (past chair and member of the board)
- 2010 Farm Credit of Maine Distinguished Citizen Award
- Governor King’s Blue Ribbon Commission on Maine Health Care Costs (member)
- New England School of Communications (past chair, CEO and president)

Maine Forest Products Council
 535 Civic Center Drive
 Augusta, Maine 04330
 (207) 622-9288
 FAX (207) 626-3002
 www.maineforest.org

2009-2010 Council Officers

President: Don White
First Vice President: Dwain Allen
Second Vice President: Mark Doty
Secretary: James Contino
Treasurer: John Gray

Executive Committee Members:

Peter Triandafillou
 John Gray
 Steve Schley
 Steve Coleman
 Jim Robbins
 Richard Robertson

Executive Director: Patrick Strauch
 pstrauch@maineforest.org

SFI Director: Patrick Sirois
 psirois@maineforest.org

Communications Coord.: James Cote
 jcote@maineforest.org

Office Manager / Administrative Assistant:
 Sue McCarthy smccarthy@maineforest.org

Forest Products News is published for members of the Maine Forest Products Council, a not-for-profit association of landowners, loggers, foresters, truckers, wood processors and forest products service firms.

Articles appearing in this newsletter may be reproduced without permission. Credit is appreciated. Editorial submissions and suggestions are encouraged.

The Maine Forest Products Council is a proud supporter of:



(Continued on page 3)

LePage. (Cont. from page 2)

- Maine Tree Foundation (past board member)
- Professional Logging Contractors of Maine Master Logger Certification Board (past member)
- New England Electric Utility Rate Forum (past chair and member)
- Governor’s (VT) Task Force on Wood as a Source of Energy (member)
- Candidate for governor in 2010 Maine GOP primary
- Led USAID workshop on sustainable forestry in Russia Far East

Education

B.A. (economics), Earlham College (1964)

Ph.D. Johns Hopkins Univ., Dept. of Geography and Environmental Studies (1970): research area: resolution of conflicts in forest resource management: case study of T16R4, Aroostook Co.

Other: University of East Africa (agricultural economics), Harvard IEM (educational leadership), Stone & Webster Electric Utility Mgmt. Institute, Harvard Forest research etc.

The Maine Department of Conservation is a natural resource agency whose bureaus oversee the management, development and protection of some of Maine’s most special places: 17 million acres of forest land, 10.4 million acres of unorganized territory, 48 parks and historic sites and more than 480,000 acres of public reserved land. The Department of Conservation, created in 1973, has as its mission to benefit the residents, landowners, and users of the state’s natural resources by promoting stewardship and ensuring responsible balanced use of Maine’s land, forest, water, and mineral resources.

LURC. (Cont. from page 1)

dures, LURC officials said. “We’ve had an expedited permitting process for some time,” Catherine Carroll, LURC director, said. “We are now looking to improve this process, making it faster and opening it to more types of residential construction. We also are looking at and moving forward on non-residential development as well.”

“We have always provided good customer service, and we are responding to what people are saying,” Scott Rollins, LURC Permitting and Compliance Division manager, said.

Rollins emphasized that the expedited process would be available for a variety of new construction, including new camps, new homes, foundations under existing homes, additions to structures, and accessory buildings, such as storage sheds and garages, and any activity relating to a residence that requires a permit.

He said that the guaranteed expedited process would apply to complete applications, adding that LURC staff members are available to help applicants make sure those applications are complete before submission.

Created by the Maine Legislature in 1971, LURC serves as the planning and zoning board for the state’s Unorganized Territories, consisting of 420 Townships which have no local form of government. LURC also provides services to certain coastal islands and seven towns and 32 plantations that choose to have the agency provide land use control for them. LURC’s jurisdiction encompasses approximately 10.5 million acres or roughly half the area of Maine.

About 700 residential permits are handled annually by the agency, amounting to about 67 percent of

LURC’s permitting work, Rollins said.

Residential building permits are used for all forms of residential development, Rollins said. LURC has had expedited building permit applications since 2004, but only for certain specific proposals. This new process allows the expedited application to be used for almost all residential building permits in those sub-districts or zones where residential development is allowed, which accounts for approximately 95 percent of the 10.5 million acres of LURC jurisdiction, he said.

“The expedited permit application allows for a much quicker process both for the applicant in preparing the application and for LURC staff in reviewing and processing the application,” Rollins said. “It allows the application also to serve as the approved permit once it is reviewed and signed-off on by LURC staff, in many cases on the same day.”

Rollins said that anyone needing help with the expedited application can contact LURC staff. The agency has five local, full-service offices in the LURC region, as well as the Augusta office, he said.

Carroll said the agency is in the process of creating an expedited permit application that will be used for many small-scale commercial and industrial developments allowed in specific sub-districts and zones. That process also will offer a similar guarantee and most likely will be

(Continued on page 4)

LURC..... (Cont. from page 3)

ready by early February, the LURC director said.

"In the coming months, we will make updates on other types of LURC applications and activities as well," Carroll said.

LURC customers also are reminded that they can use the LURC customer survey found on the LURC home page to submit comments or concerns at: <http://www.maine.gov/doc/lurc>

As of Jan. 3, the new Expedited Residential Building Permit Application also can be found on line at the LURC home page.

Applicants also can visit the LURC Office in Augusta or one of the five local Regional LURC offices. To find the local regional office serving your area, go to: <http://www.maine.gov/doc/lurc/offices.html>

For more information, contact Scott Rollins, LURC Permitting & Compliance Division manager, at (207) 287-2631 or by email at scott.rollins@maine.gov.

**SAVE THE DATE:
RANGELEY CHOSEN
AS LOCATION FOR
2011 MFPC
ANNUAL MEETING**

**The meeting will be at the
Saddleback Ski Area in
Rangeley, Maine on
September 11-12**

Legislature Announces Committee Assignments

On December 22, the Clerk of the Maine House and Secretary of the Maine Senate Announced Committee Assignments for the 125th Maine Legislature. MFPC thought that members would be interested in finding out what legislators were appointed to specific committees, so we have printed them below in this month's newsletter for your convenience.

*Ranking Minority Member

AGRICULTURE, CONSERVATION AND FORESTRY

- Senator Roger L. Sherman (R-Aroostook), Chair
- Senator Michael D. Thibodeau (R-Waldo)
- Senator Elizabeth M. Schneider (D-Penobscot)
- Representative Peter E. Edgecomb (R-Caribou), Chair
- Representative Dean A. Cray (R-Palmyra)
- Representative Jeffery Allen Gifford (R-Lincoln)
- Representative Russell J. Black (R-Wilton)
- Representative Karen D. Foster (R-Augusta)
- Representative Jeffrey L. Timberlake (R-Turner)
- Representative Jeff M. McCabe (D-Skowhegan)*
- Representative Andrew R. O'Brien (D-Lincolntonville)
- Representative Peter S. Kent (D-Woolwich)
- Representative James F. Dill (D-Old Town)

APPROPRIATIONS AND FINANCIAL AFFAIRS

- Senator Richard W. Rosen (R-Hancock), Chair
- Senator Roger J. Katz (R-Kennebec)
- Senator Dawn Hill (D-York)
- Representative Patrick S. A. Flood (R-Winthrop), Chair
- Representative Tom J. Winsor (R-Norway)
- Representative Kathleen D. Chase (R-Wells)
- Representative Tyler Clark (R-Easton)
- Representative Kenneth Wade Fredette (R-Newport)
- Representative Dennis L. Keschl (R-Belgrade)
- Representative Margaret R. Rotundo (D-Lewiston)*
- Representative John L. Martin (D-Eagle Lake)

LandVest®

SERVING TIMBERLAND INVESTORS SINCE 1968

Full Service Forestry Consulting
Across New England, New York and Pennsylvania

Timberland Marketing and Investment Analysis Services
Provided throughout the U.S. and Canada

**Foresters and Licensed Real Estate Professionals
in 13 Regional Offices:**

Bangor, ME (207) 947-2800	Lowville, NY (315) 376-2832
Bethel, ME (207) 836-2076	Tupper Lake, NY (518) 359-2385
Clayton Lake, ME (603) 466-7374	Concord, NH (603) 228-2020
Jackman, ME (207) 668-7777	W. Stewartstown, NH 603-246-8800
Portland, ME (207) 774-8518	St. Marys, PA (814) 781-1637
St. Aurélie, ME (418) 593-3426	Newport, VT (802) 334-8402
Americus, GA (229) 924-8400	

www.landvest.com

Stewardship For Your Timberland Investment

EDUCATION AND CULTURAL AFFAIRS

Senator Brian D. Langley (R-Hancock), Chair
 Senator Garrett Paul Mason (R-Androscoggin)
 Senator Justin L. Alfond (D-Cumberland)
 Representative David E. Richardson (R-Carmel), Chair
 Representative Peter E. Edgecomb (R-Caribou)
 Representative Howard E. McFadden (R-Dennysville)
 Representative Peter B. Johnson (R-Greenville)
 Representative Joyce A. Maker (R-Calais)
 Representative Michael D. McClellan (R-Raymond)
 Representative Richard V. Wagner (D-Lewiston)*
 Representative Mary Pennell Nelson (D-Falmouth)
 Representative Stephen D. Lovejoy (D-Portland)
 Representative Helen Rankin (D-Hiram)
 Representative Madonna M. Soctomah (Passamaquoddy Tribe)

ENERGY, UTILITIES AND TECHNOLOGY

Senator Michael D. Thibodeau (R-Waldo), Chair
 Senator Christopher W. Rector (R-Knox)
 Senator Philip L. Bartlett II (D-Cumberland)
 Representative Stacey Allen Fitts (R-Pittsfield), Chair
 Representative James M. Hamper (R-Oxford)
 Representative Dean A. Cray (R-Palmyra)
 Representative Larry C. Dunphy (R-Emden)
 Representative Aaron F. Libby (R-Waterboro)
 Representative Jon Hinck (D-Portland)*
 Representative Alexander Cornell du Houx (D-Brunswick)
 Representative Roberta B. Beavers (D-South Berwick)
 Representative Mark N. Dion (D-Portland)
 Representative Louis J. Luchini (D-Ellsworth)

Representative David C. Webster (D-Freeport)
 Representative Sara R. Stevens (D-Bangor)

CRIMINAL JUSTICE AND PUBLIC SAFETY

Senator Garrett Paul Mason (R-Androscoggin), Chair
 Senator Rodney L. Whittemore (R-Somerset)
 Senator Stan Gerzofsky (D-Cumberland)
 Representative Gary E. Plummer (R-Windham), Chair
 Representative David C. Burns (R-Whiting)
 Representative Ricky D. Long (R-Sherman)
 Representative Susan E. Morissette (R-Winslow)
 Representative Deborah J. Sanderson (R-Chelsea)
 Representative Anne M. Haskell (D-Portland)*
 Representative Stephen P. Hanley (D-Gardiner)
 Representative Michel A. Lajoie (D-Lewiston)
 Representative Anna D. Blodgett (D-Augusta)
 Representative Michael H. Clarke (D-Bath)

(Continued on page 6)



Think of us as your natural resource

AT BERRY DUNN, WE DO IT RIGHT. With vibrant entrepreneurial spirit, deep resources, seasoned judgment, and Maine roots. Our experts understand the complex issues that drive today's business in the region—and around the world. We're fully engaged, responsive, and ahead of the curve.

The result? State-of-the-art audit and accounting, tax, information technology, and business consulting services.

Choose the right team. Choose Berry Dunn.

BERRY DUNN . MCNEIL & PARKER
BIDMP
Bangor | Portland | Manchester | bdmp.com

LEARN MORE.
Call 207 942-1600
or visit bdmp.com.

ENVIRONMENT AND NATURAL RESOURCES

Senator Thomas B. Saviello (R-Franklin), Chair
 Senator Roger L. Sherman (R-Aroostook)
 Senator Seth A. Goodall (D-Sagadahoc)
 Representative James M. Hamper (R-Oxford), Chair
 Representative Bernard L. A. Ayotte (R-Caswell)
 Representative Jane S. Knapp (R-Gorham)
 Representative Ricky D. Long (R-Sherman)
 Representative James W. Parker (R-Veazie)
 Representative Robert S. Duchesne (D-Hudson)*
 Representative Melissa Walsh Innes (D-Yarmouth)
 Representative Joan W. Welsh (D-Rockport)
 Representative Denise Patricia Harlow (D-Portland)
 1 Vacancy

HEALTH AND HUMAN SERVICES

Senator Earle L. McCormick (R-Kennebec), Chair
 Senator Nichi S. Farnham (R-Penobscot)
 Senator Margaret M. Craven (D-Androscoggin)
 Representative Meredith N. Strang Burgess (R-Cumberland), Chair
 Representative Leslie T. Fossel (R-Alna)
 Representative Richard S. Malaby (R-Hancock)
 Representative Beth A. O'Connor (R-Berwick)
 Representative Deborah J. Sanderson (R-Chelsea)
 Representative Heather W. Sirocki (R-Scarborough)
 Representative Mark W. Eves (D-North Berwick)*
 Representative Matthew J. Peterson (D-Rumford)
 Representative Linda F. Sanborn (D-Gorham)
 Representative Peter C. Stuckey (D-Portland)

INLAND FISHERIES AND WILDLIFE

Senator Thomas H. Martin, Jr. (R-Kennebec), Chair
 Senator A. David Trahan (R-Lincoln)
 Senator John L. Patrick (D-Oxford)
 Representative Paul T. Davis, Sr. (R-Sangerville), Chair
 Representative Ralph W. Sarty, Jr. (R-Denmark)
 Representative Dale J. Crafts (R-Lisbon)
 Representative Eleanor M. Espling (R-New Gloucester)
 Representative Stacey K. Guerin (R-Glenburn)
 Representative Stephen J. Wood (R-Sabattus)
 Representative Herbert E. Clark (D-Millinocket)*
 Representative Jane E. Eberle (D-South Portland)
 Representative Sheryl J. Briggs (D-Mexico)
 Representative Michael A. Shaw (D-Standish)

INSURANCE AND FINANCIAL SERVICES

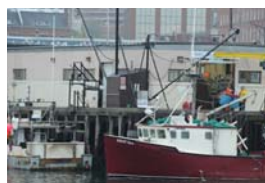
Senator Rodney L. Whittemore (R-Somerset), Chair
 Senator Lois A. Snowe-Mello (R-Androscoggin)
 Senator Joseph C. Brannigan (D-Cumberland)
 Representative Wesley E. Richardson (R-Warren), Chair
 Representative Jonathan B. McKane (R-Newcastle)



We understand your industry. We're dedicated to your success.

Providing financing for...

- forest products
agriculture & food
commercial fishing & seafood
rural property



Auburn | 800.831.4230
Presque Isle | 800.831.4640
farmcreditmaine.com



Proud member of the Farm Credit System

- Representative Bradley S. Moulton (R-York)
Representative Karen D. Foster (R-Augusta)
Representative Charles R. Priest (D-Brunswick)*
Representative Cynthia A. Dill (D-Cape Elizabeth)
Representative Maeghan Maloney (D-Augusta)
Representative Megan M. Rochelo (D-Biddeford)
Representative Wayne T. Mitchell (Penobscot Nation)

LABOR, COMMERCE, RESEARCH AND ECONOMIC DEVELOPMENT

- Senator Christopher W. Rector (R-Knox), Chair
Senator Thomas H. Martin, Jr. (R-Kennebec)
Senator Troy Dale Jackson (D-Aroostook)
Representative Kerri L. Prescott (R-Topsham), Chair
Representative Dana L. Dow (R-Waldoboro)
Representative Melvin Newendyke (R-Litchfield)
Representative Amy Fern Volk (R-Scarborough)
Representative Frederick L. Wintle (R-Garland)
Representative John L. Tuttle, Jr. (D-Sanford)*
Representative Timothy E. Driscoll (D-Westbrook)
Representative Paul E. Gilbert (D-Jay)
Representative Robert B. Hunt (D-Buxton)
Representative Erin D. Herbig (D-Belfast)

- Representative Joyce A. Fitzpatrick (R-Houlton)
Representative Susan E. Morissette (R-Winslow)
Representative John J. Picchiotti (R-Fairfield)
Representative Sharon Anglin Treat (D-Hallowell)*
Representative Adam A. Goode (D-Bangor)
Representative Henry E. M. Beck (D-Waterville)
Representative Terry K. Morrison (D-South Portland)
Representative Paulette G. Beaudoin (D-Biddeford)

JUDICIARY

- Senator David R. Hastings III (R-Oxford), Chair
Senator Richard G. Woodbury (U-Cumberland)
Senator Lawrence Bliss (D-Cumberland)
Representative Joan M. Nass (R-Acton), Chair
Representative G. Paul Waterhouse (R-Bridgton)
Representative Michael G. Beaulieu (R-Auburn)
Representative Ralph W. Sarty, Jr. (R-Denmark)

MARINE RESOURCES

- Senator Lois A. Snowe-Mello (R-Androscoggin), Chair
Senator Brian D. Langley (R-Hancock)
Senator Nancy B. Sullivan (D-York)
Representative Windol C. Weaver (R-York), Chair
Representative Dianne C. Tilton (R-Harrington)
Representative Jane S. Knapp (R-Gorham)
Representative Kimberly N. Olsen (R-Phippsburg)
Representative Wayne R. Parry (R-Arundel)
Representative W. Bruce MacDonald (D-Boothbay)*
Representative Charles B. Kruger (D-Thomaston)
Representative Devin M. Beliveau (D-Kittery)
Representative Ralph Chapman (D-Brooksville)
Representative Walter A. Kumiega III (D-Deer Isle)

STATE AND LOCAL GOVERNMENT

Senator Douglas A. Thomas (R-Somerset), Chair
Senator Ronald F. Collins (R-York)
Senator Nancy B. Sullivan (D-York)
Representative H. David Cotta (R-China), Chair
Representative Lance Evans Harvell (R-Farmington)
Representative Bradley S. Moulton (R-York)
Representative Michael Celli (R-Brewer)
Representative James S. Gillway (R-Searsport)
Representative Andrea M. Boland (D-Sanford)*
Representative Bryan T. Kaenrath (D-South Portland)
Representative Brian D. Bolduc (D-Auburn)
Representative Alan M. Casavant (D-Biddeford)
Representative Anne P. Graham (D-North Yarmouth)

TAXATION

Senator A. David Trahan (R-Lincoln), Chair
Senator David R. Hastings III (R-Oxford)
Senator Richard G. Woodbury (U-Cumberland)
Representative L. Gary Knight (R-Livermore Falls),
Chair
Representative G. Paul Waterhouse (R-Bridgton)
Representative Bruce A. Bickford (R-Auburn)
Representative Paul Edward Bennett (R-Kennebunk)
Representative David R. Burns (R-Alfred)
Representative R. Ryan Harmon (R-Palermo)
Representative Seth A. Berry (D-Bowdoinham)*
Representative Donald E. Pilon (D-Saco)
Representative Mark E. Bryant (D-Windham)
Representative Elspeth M. Flemings (D-Bar Harbor)

TRANSPORTATION

Senator Ronald F. Collins (R-York), Chair
Senator Douglas A. Thomas (R-Somerset)
Senator Bill Diamond (D-Cumberland)
Representative Richard M. Cebra (R-Naples), Chair
Representative Kimberley C. Rosen (R-Bucksport)
Representative James S. Gillway (R-Searsport)
Representative Wayne R. Parry (R-Arundel)
Representative Peter B. Rioux (R-Winterport)

Representative Alexander Reginald Willette (R-Mapleton)
Representative Edward J. Mazurek (D-Rockland)*
Representative George Hogan (D-Old Orchard Beach)
Representative Ann E. Peoples (D-Westbrook)
Representative Charles Kenneth Theriault (D-Madawaska)

VETERANS AND LEGAL AFFAIRS

Senator Nichi S. Farnham (R-Penobscot), Chair
Senator Debra D. Plowman (R-Penobscot)
Senator John L. Patrick (D-Oxford)
Representative Michael G. Beaulieu (R-Auburn), Chair
Representative Jarrod S. Crockett (R-Bethel)
Representative Michael J. Willette (R-Presque Isle)
Representative Douglas K. Damon (R-Bangor)

Complete timberland investment services with one call

Acquisition Due Diligence

Forestland Appraisals

Land Brokerage

Timber Inventory

Certified Forestry

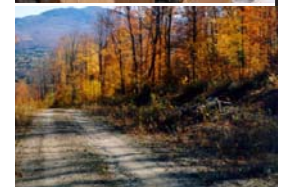
GIS Data & Analysis

fountains

www.fountainsamerica.com

Serving Maine, New Hampshire, Vermont,
New York and Appalachia

1-866-348-4010



Representative David D. Johnson (R-Eddington)
 Representative Michael E. Carey (D-Lewiston)*
 Representative Linda M. Valentino (D-Saco)
 Representative Diane Russell (D-Portland)
 Representative Thomas R. W. Longstaff (D-Waterville)
 Representative Benjamin M. Chipman (U-Portland)

JOINT SELECT COMMITTEE ON REGULATORY FAIRNESS AND REFORM

Senator Jonathan T. E. Courtney (R-York), Chair
 Senator Christopher W. Rector (R-Knox)
 Senator Thomas B. Saviello (R-Franklin)
 Senator Justin L. Alford (D-Cumberland)
 Senator Seth A. Goodall (D-Sagadahoc)
 Representative Jonathan B. McKane (R-Newcastle), Chair
 Representative Stacey Allen Fitts (R-Pittsfield)
 Representative Dianne C. Tilton (R-Harrington)
 Representative Dana L. Dow (R-Waldoboro)
 Representative Michael D. McClellan (R-Raymond)
 Representative James W. Parker (R-Veazie)
 Representative Robert S. Duchesne (D-Hudson)*
 Representative Sharon Anglin Treat (D-Hallowell)
 Representative Michael E. Carey (D-Lewiston)
 Representative Linda M. Valentino (D-Saco)



***The following is from a press released distributed by Senator Collins' office. MFPC applauds the work that Senator Collins did in championing the issue, and we look forward to working with her in coming months to try to identify other solutions.*

Disappointed That Federal Funding Bill Fails; Senator Collins Continues To Push For Truck Weight Measure For Maine

WASHINGTON, D.C.— U.S. Senator Susan Collins expressed deep disappointment after Senate Majority Leader Harry Reid decided Thursday night to abandon efforts to pass a federal funding bill that included a provision written by Senator Collins to extend the pilot program that allows trucks weighing up to 100,000 pounds to travel on federal interstate highways in Maine. Instead, it appears that the Senate will now move to a short-term funding bill based on the bill passed last week by the House of Representatives that does not include an extension of the truck weights project.

“This is a disappointing setback for those of us who want to change federal law to allow the heaviest trucks to stay on the federal interstates rather than diverting them to secondary roads and downtown,” said Senator Collins, who authored and successfully secured the one-year pilot project last year. “Unfortunately, when the House of Representatives passed a sweeping funding bill last week, it did not include a provision to make permanent or even extend the pilot program. While I was successful in securing a one-year extension of the pilot program in a Senate funding bill, it is now clear that the Majority Leader has abandoned this bill. Instead, it appears the Senate will consider a short-term funding bill similar to the House-passed bill. I will continue to pursue every possible option to extend the successful pilot program; however, it is increasingly unlikely that we can restore the truck weights language that the House failed to include in time to prevent the project from expiring.”

Last year, Senator Collins successfully included a provision in the FY 2010 Omnibus Appropriations bill that created a one-year pilot project that allows trucks weighing up to 100,000 pounds to travel on Maine’s federal interstates, such as I-95, 195, 295 and 395. According to the results of a preliminary study by the Maine Department of Transportation, the pilot program has allowed Maine businesses to receive raw materials and ship products more economically, thus helping to preserve and create jobs. It has also improved safety, saved energy, and reduced emissions. For example, on a trip from Hampden to Houlton, a truck travelling on Interstate 95 saves 50 minutes over Route 2 and avoids more than 270 intersections and nine school crossings. The driver also saves approximately \$30 on fuel by traveling on the interstate. The pilot project expired on December 18.

MFPC's Cote Moves on as President & CEO of Associated Builders and Contractors of Maine



Dear Members,

Rather than write this story as an article, I decided I would write it in letter form.

On January 4th, I accepted the position of President & CEO of Associated Builders and Contractors of Maine. I will be replacing Kathleen Newman, who is moving on

to serve as Governor LePage's Deputy Chief of Staff and Legislative Director.

While this opportunity presented itself rather quickly, it was one I made with serious consideration towards professional advancement and with family in mind.

It is bitter sweet to leave the forest products industry. As many of you know, I deeply enjoy spending time in the woods, and my experience at MFPC has made those experiences even more special, giving me a special appreciation for the people and businesses behind the success of our working forests.

It has been even more a pleasure, however, walking the halls of Augusta in the past two and a half years, knowing that our organization fights for an industry that has such tremendous impact on our economy and society. I want to thank you for giving me this opportunity.

In many ways, we will continue to fight side by side. ABC Maine represents 170 members in the construction industry, and they pay particular attention to labor, tax, and natural resource issues. I'm confident that I will continue to work actively with MFPC.

I believe that MFPC is now very well positioned for a successful year in Augusta, and I plan to make sure the transition to my successor goes as smoothly as possible.

I wish all of you much success in the year to come and I hope that if I can ever be of help to MFPC or your company that you will call on me.

Again, thank you for all of your support in the past few years, and I look forward to staying in touch.

Sincerely,
James Cote