

# FOREST PRODUCTS NEWS


MAINE FOREST PRODUCTS COUNCIL

September - October 2009

VOLUME 24, ISSUE 6

## Members Attend an Enjoyable Annual Meeting

*By Patrick Strauch  
MFPC Executive Director*

 Well over a hundred members enjoyed this year's Annual Meeting which was held at the Lucerne Inn in Dedham, Maine.

The event started off with the annual golf tournament on Sunday, September 21, just across the street at the Lucerne Golf Course where the Prentiss and Carlisle Team (Don White and wife Janice, Jim Maynard of Berry Dunn McNeil



and Parker, and James Cote of MFPC) took first place gross, and the Verso/

Pingree/ Plum Creek Team (Jim Contino of Verso, Steve Schley of Pingree Associates, and Paul Davis of Plum Creek) took first place net. Golfers then joined other members for dinner and social hour across the street at the Lucerne Inn.

Monday morning kicked off with a breakfast, followed by the business meeting, where new Board members and Executive Committee members and officers

*(Continued on page 3)*

## CLUP Hearings End Quietly

As the end of October approaches the CLUP hearing process is winding down, and LURC will begin to review comments and begin drafting the next version of the plan.

The public hearings, held in Augusta, Bangor, and Presque Isle in late September were for the most part quiet compared to the public workshops of 2008. Many MFPC members and friends testified, and endorsed the Council's own testimony, which was subsequently submitted on October 16. If you would like to obtain a copy of the Council's testimony, please contact MFPC staff.

While LURC has made the effort to make several changes due to comments made by the forest products industry, the Council recognized that there were still a significant number of issues that needed to be more accurately presented in the CLUP. In order to most effectively present these issues, the Council decided to focus on nine over-arching themes. Those themes were:

1. Better recognize the interests of residents, landowners, and local economies.
2. Reflect the need to achieve balance between the principal values.

*(Continued on page 4)*

## IN THE NEWS



Presidents Message.....	Page 2
DWA Guidelines.....	Page 4
Legislative Tour.....	Page 5
SFI Achievement.....	Page 7
Dear Wintering Area.....	Page 7
Governor Promotes SFI.....	Page 8
Legislature - Second Session.....	Page 8
Natural Resources Network.....	Page 9

## President's Message:

### Decision Time

To no one's surprise, 2011 will usher in a new Governor elect. I'm sure some of you are being inundated with check request to help aspiring candidates meet the requirements of the Maine Clean Election Act which helps keep this event in the forefront of your thoughts.

Although it is impossible at this time to predict who will be the next Governor, certain events can be surmised with somewhat better certainty. Looking back over the last three administrations, a pattern emerges. Each Governor has either promoted or been confronted with major forestry related legislation and even referendums.

For example, the McKernan Administration dealt with the Forest Practice Act, Governor King was saddled with the clearcut referendums and the current Administration brought us the liquidation harvesting bill. Now these are just some examples of the forestry related issues occurring over the past 23 years and are only being mentioned because they are well remembered by most of us.

The point I hope to make is that a new administration will come up with an agenda, either actively or re-actively, to address how forests in Maine should be dealt with. We can further predict that before the election, one or more candidates will come out with a plan that will involve forestry issues possibly without benefit of much collaboration with our entire industry. As an industry we can sit back and wait for others to decide how our lives will be impacted or we can try and influence the outcome.

As a disclaimer, this message isn't



**Doug Denico**

advocating for the Council's direct involvement in who should be the next Governor. What I am proposing is that we, as an industry, be prepared to articulate what we believe are the important issues and avail them to the candidates.

*As an industry we can sit back and wait for others to decide how our lives will be impacted or we can try and influence the outcome.*

As I look back over several decades, certain core pieces of legislation and voluntary initiatives contributed to make our industry productive and viable. Examples that stand out would include the Tree Growth Tax law, forest fire and disease protection, the Cooperative Forestry Research Unit and the BETR program. Such basic examples have helped the industry be financially successful and kept our forests from being ravaged. It would be in our best interest to advocate for more of these very basic but critical types of legislation and private initiatives. I believe gaps still exist that should be filled to insure the industries continued health. We need to decide what those critical gaps are and offer our solutions to aspiring candidates. If our needs aren't known they can't be addressed.

I have already made up my list, how about you?

Maine Forest Products Council  
535 Civic Center Drive  
Augusta, Maine 04330  
(207) 622-9288  
FAX (207) 626-3002  
[www.maineforest.org](http://www.maineforest.org)

#### 2008-2009 Council Officers

President: Doug Denico  
First Vice President: Dwain Allen  
Second Vice President: Don Tardie  
Secretary: James Contino  
Treasurer: Don White  
Immediate Past President: Peter Triandafilou

#### Executive Committee Members:

John Gray  
Steve Schley  
Tom Gardner

Executive Director: Patrick Strauch  
[pstrauch@maineforest.org](mailto:pstrauch@maineforest.org)

SFI Director: Patrick Sirois  
[psirois@maineforest.org](mailto:psirois@maineforest.org)

Communications Coord.: James Cote  
[jcote@maineforest.org](mailto:jcote@maineforest.org)

Office Manager: Kerry Casey  
[kcasey@maineforest.org](mailto:kcasey@maineforest.org)

Administrative Assistant: Sue McCarthy  
[smccarthy@maineforest.org](mailto:smccarthy@maineforest.org)

Forest Products News is published for members of the Maine Forest Products Council, a not-for-profit association of landowners, loggers, foresters, truckers, wood processors and forest products service firms.

Articles appearing in this newsletter may be reproduced without permission. Credit is appreciated. Editorial submissions and suggestions are encouraged.

The Maine Forest Products Council is a proud supporter of:



## Annual Meeting. *(Cont. from page 1)*

were elected. New members of the Board of Directors include Bruce Verrill of Verrill Group Incorporated, Randy Cousineau of Cousineau Inc., and Jeannot Carrier of E.J. Carrier, Inc. New members elected to the Executive Committee include Catherine Robbins-Joliffe of Robbins Lumber, and Dick Robertson of Farm Credit of Maine.

Berry Dunn McNeil and Parker gave a presentation on the Council's financial position and budget, which was followed up in more detail by Council Treasurer, Don White.

Patrick Strauch and James Cote then reviewed the status of several projects being worked on at MFPC, including a broadened focus on manufacturing and energy issues, an enhanced communication effort, and LURC's Comprehensive Land Use Plan among others. The Board also heard reports on several other initiatives, including new Deer Wintering Area Management Guidelines, the Council's involvement in a process designed to bring federal land acquisition money to Maine, and a growing need for the Council to produce a vision of Maine's working forests for policymakers to



**Doug Denico, MFPC President & Paul Jannke Forest Economic Advisor**

use as a guidance document in upcoming election years.

Paul Jannke, a principal with Forest Economic Advisors (formerly with RISI) ended the morning with an economic forecasting presentation on North American, in particular Northeastern, forest products markets. Of particular interest was Paul's outlook on saw log and building products markets. The presentation is available by contacting James Cote.

A special thanks to Farm Credit of Maine for sponsoring Mr. Jannke and his presentation.

After lunch, members enjoyed tours of two facilities in the nearby area which provided a backdrop for important discussions concerning Maine's forest products industry.

At the Green Lake Salmon Hatchery, members were able to both private and public experts about the impacts that the new Atlantic salmon ESA listing will have on landowners and manufacturing facilities. At the Verso facility in Bucksport, members were able to hear firsthand about what one member is doing to stay competitive in a global marketplace at a time when unpredictable financial markets and public policy are making day to day business very difficult. Thank you to all

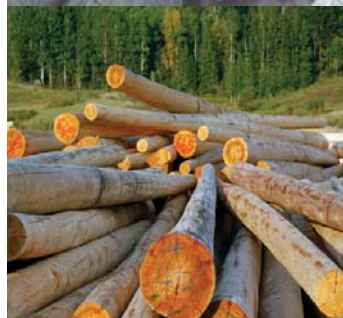
of those who participated and volunteered their facilities for this part of the annual meeting. It is extremely important that our industry continue to share information by conducting these experiences on the ground.

The tours concluded in late afternoon and members then returned to the Lucerne Inn for the evening banquet and auction, where several industry champions were recognized in the annual awards ceremony (see back pages for award recipients) and all enjoyed laughs and a good time during the auction.

**We look forward to next year's annual meeting where we will hold MFPC's 50<sup>th</sup> Anniversary Celebration!**

*(Continued on page 9)*

**We are the relationship lender for  
Maine's forest products industry.**



Take advantage of the knowledge of lending professionals with over 60 years of experience in lending to the forest products industry.

When you're ready to purchase timber property, equipment, vehicles or mills, call us. We'll stop by your place to discuss your business and financing needs.

**We offer flexible lines of credit and equipment leases that meet *your* needs.**

To learn more about the solutions we can offer your business, please contact us today  
Auburn 1-800-831-4230  
Presque Isle 1-800-831-4640



**Farm Credit  
OF MAINE**

Experts in lending to Maine's natural resource-based industries since 1916.

[www.FarmCreditMaine.com](http://www.FarmCreditMaine.com)

CLUP..... (Cont. from page 1)

3. Acknowledge and account for the significant contributions and impacts of land conservation over the period since the last CLUP was adopted.
4. Calm the rhetoric around “uncontrolled development” in the jurisdiction.
5. Recognize that planning for recreation is primarily the responsibility of the private landowners on whose land it occurs.
6. Allow for a full range of forest management activities, and acknowledge that preservation of land value is a critical ingredient to successful management.
7. Recognize successful efforts to protect plant and animal habitat, including conservation easements, landowner initiatives, and State programs.
8. Remove the weight on “remoteness” as a principal value to be preserved at all costs.
9. Draw reasonable limits around the protection of the “scenic” character of the jurisdiction.

Along with each theme, the Council provided background information on why each topic was important, and further provided specific suggested recommendations for language that could improve the plan. The testimony was structured this way in an effort to provide constructive criticism, rather than blanket complaints about certain pieces of the plan.

As of October 20, the Commission had received over 300 comments, a large number of which appear to have been blanket “postcard” type comments initiated by various environmental organizations. After the record for hearing testimony and comments closes on October 21, interested parties will have the opportunity to submit rebuttal comments until October 28.

According to LURC staff, the summary of CLUP testimony will be discussed most likely discussed at the December monthly meeting. From there, the Commission will direct staff on what changes will need to be made, and the next version of the plan he could be presented as soon as January.

From there, LURC Commissioners will schedule a meeting in front of the Legislature’s Agriculture, Conservation and Forestry Committee to give the

Committee the opportunity to review and ask questions about the plan.

The Maine Forest Products Council will continue to monitor the progress of the plan. Please contact James Cote or Patrick Strauch with any questions.



## Council Supports DWA Guidelines

The Council has decided to endorse the recent Deer Wintering Area Guidelines established in partnership with SWOAM and the Department of Inland Fisheries and Wildlife.

In a letter dated October 12, Executive Director Patrick Strauch expressed to Commissioner Martin, “We appreciate the collaborative effort in which this document was crafted; through landowner meetings and joint field seminars with IF&W we believe a good baseline document has been constructed. How these guidelines are implemented on the landscape is dependent on an ongoing collaboration between IF&W staff and individual landowners. It is therefore imperative that these guidelines not be leveraged beyond their intended use as a bridge to a cooperative and voluntary approach to landscape scale management for white tailed deer.”

The guidelines were developed as part of the recommendations in the Maine Deer Task Force Report from 2007 which identified action items for both the Department, landowners and the sporting community.

The Council also strongly urged that the model of collaboration used to develop these guidelines should be used in other initiatives, such as Beginning with Habitat. It will be critical that these guidelines be used as a first important step to point all interested parties towards a multi-species management strategy.



## Legislative Tour: Small Crowd, Big Results

Rainy, cold, and effective. Those are probably the three words that best describe the first day of the MFPC “Working Woods Tour”, on October 7. Several legislators traveled from Augusta and Bangor early that morning to

Resources discussed habitat issues, especially in relation how silviculture and wildlife management are closely integrated. The group also discussed the efforts of the University’s Cooperative Forestry Research Unit, especially those efforts related to Canadian lynx research.

The group then joined Al Cowperthwaite of North Maine Woods at the Pelletier’s Logging Camp just beyond the North Maine Woods Telos Checkpoint for a lunch discussion about recreational management in the north woods. Al provided the group with a colorful description about the history and workings of North Maine Woods.

The final stop of the day was at an active harvesting operation, just off the Telos Road. Listening to a discussion led by Dave Wilson of Katahdin Forest Management, legislators were able to watch an active harvesting operation and ask questions about the technical aspects of a harvest. Many legislators commented that



meet with the other half of the group in the Millinocket area.

MFPC hosted Representative Peter Edgecomb, Representative Terry Hayes, Representative Sara Stevens, Representative Jon Hinck, Representative Herb Clark, Representative Terry Morrison, Representative Walter Wheeler, Representative Jeff McCabe, Representative Bob Duchesne, and Representative Brian Bolduc.

After everyone climbed about the bus, the group made its way through Millinocket and up the Golden Road. The first stop was just off Abol Bridge, where Sarah Medina of Seven Islands Land Company gave a quick presentation on recreational access and landowner liability laws here in Maine.

From there, the group traveled to a pre-commercial thinning site where Bob Wagner from the University of Maine, Marcia McKeague from Katahdin Forest Management, and Barry Burgason from Huber



this was among their favorite stops of the tour.

After drying off and warming up the group enjoyed a hot dinner and social time at Twin Pines on Millinocket Lake.

Legislative Tour. . . . . (Cont. from page 5)

The next morning started with breakfast at 7:00 a.m. and a tour led by Matt Polstein of the Twin Pines property. With Mt. Katahdin shining under the sun in the distance, Matt discussed his experience with LURC and rural development needs.

Elbridge Cleaves of Prentiss & Carlisle, and Pat Sirois of the Sustainable Forestry Initiative ended the breakfast event with presentations on the natural of development and land value, and on forest certification in Maine, respectively.

The last stop of the day was organized by several manufacturing members, including Verso Paper, Hancock Lumber, Huber Resources, Pleasant River Lumber, W.T. Gardner & Sons, Issacson Lumber, and Hardwood Products Company, along with several others. Legislators were able to view different products made by each company and hear short presentations about the history and workings of each company. The group then enjoyed a lunch under the tent and headed home.

In sum, the effort seemed to be very effective and enjoyable for legislators. Having several members of the Natural Resources Committee in attendance was especially important, as many of the issues MFPC will be dealing with will be in front of them this session. MFPC plans to develop opportunities for future legislatures as well. We will continue to work with members and

# LandVest®

**SERVING TIMBERLAND INVESTORS SINCE 1968**

Full Service Forestry Consulting  
Across New England, New York and Pennsylvania

Timberland Marketing and Investment Analysis Services  
Provided throughout the U.S. and Canada

**Foresters and Licensed Real Estate Professionals  
in 13 Regional Offices:**

- |                                 |                                  |
|---------------------------------|----------------------------------|
| Bangor, ME (207) 947-2800       | Lowville, NY (315) 376-2832      |
| Bethel, ME (207) 836-2076       | Tupper Lake, NY (518) 359-2385   |
| Clayton Lake, ME (603) 466-7374 | Concord, NH (603) 228-2020       |
| Jackman, ME (207) 668-7777      | W. Stewartstown, NH 603-246-8800 |
| Portland, ME (207) 774-8518     | St. Marys, PA (814) 781-1637     |
| St. Aurélie, ME (418) 593-3426  | Newport, VT (802) 334-8402       |
|                                 | Americus, GA (229) 924-8400      |

*www.landvest.com*

*Stewardship For Your Timberland Investment*



legislators to explore new and effective ways to expose policy makers to Maine's forest products industry.

**Thanks to the following  
members for their generous  
sponsorships and help on  
this tour**

- Huber Resources
- Robbins Lumber
- Seven Islands Land Co.
- North Maine Woods
- Prentiss & Carlisle
- W. T. Gardner
- Pleasant River
- Verso Paper
- Wagner Forest Management
- Plum Creek
- Katahdin Forest Management

## Maine Committee Wins SFI Achievement Award

NASHVILLE, Tenn. – Maine won the 11<sup>th</sup> annual Sustainable Forestry Initiative (SFI) Implementation Committee achievement award for a combination of activities promoting responsible forest management and community outreach.

“In Maine, we value all independent forest certification standards, including SFI,” said Maine Governor John Baldacci. “This is borne out by our strong certification record. I congratulate Maine’s SFI Implementation Committee for all that it has done for our state’s forests and communities.”

The SFI Implementation Committee was actively involved in the Maine Green Forest Summit, initiated by Baldacci, which raised awareness about forest certification and market opportunities for certified products. It brought together more than 250 groups and individuals – from architects to logging contractors. One of the outcomes was a partnership with Bank of America to help build a home with Habitat for Humanity of Greater Portland.

“It’s not a surprise that our committee is so active – Maine has the highest percentage of certified lands of any state, and three quarters of these lands meet the SFI forest standard,” said Pat Sirois, coordinator of the Maine SFI Implementation Committee. “We owe it to the people of Maine to manage these forestlands well, and involve them in what we are doing.”

Maine, which is 90 percent forestland, has 5.5 million acres (2.2 million hectares) certified to the SFI standard, as well as mills with SFI chain-of-custody or fiber sourcing certification. In 2008, Baldacci directed state officials to buy wood or paper products from forests certified to an independent certification standard such as SFI.

“The Maine SFI Implementation Committee has found countless ways to improve forest practices and deliver community benefits across the state,” Kathy Abusow, president and CEO of SFI Inc., said today. “Members have been involved in everything from Habitat for Humanity to the Maine Green Forest Summit in

addition to their day-to-day work supporting small landowners, promoting best management practices, and delivering logger training and public outreach.”

The independent, non-profit SFI Inc. is one of the largest third-party forest certification programs in the world, with more than 175 million acres (70 million hectares) certified across North America. There are 37 SFI Implementation Committees at state, provincial or regional levels across the United States and Canada, which extend the benefits of the SFI program beyond SFI-certified lands. Committee members support community outreach, promote best management practices and deliver training programs for loggers and forest professionals.

The Maine SFI Implementation Committee, which received the achievement award at the SFI annual conference in September, earlier won the award in 2000. Its members include private landowners, public agencies, forest companies of all sizes, conservation groups, educational programs and universities, and they work closely with a wide range

of partners, including environmental organizations.



**About SFI Inc.....**SFI Inc. is a 501c(3) non-profit charitable organization, and is solely responsible for maintaining, overseeing and improving the Sustainable Forestry Initiative program ([www.sfiprogram.org](http://www.sfiprogram.org)), which is internationally recognized and among the largest in the world. It is one of the fastest-growing forest certification programs with more than 175 million acres (70 million hectares) of SFI-certified forests across North America. The SFI Standard also includes unique fiber sourcing requirements that promote responsible forest management on all suppliers’ lands and a chain-of-custody certification, which is used to tell buyers how much certified fiber is in a specific product. The SFI forest standard is endorsed by the Programme for the Endorsement of Forest Certification, a global umbrella organization that has strict requirements for endorsement. SFI Inc. is governed by a three-chamber board of directors representing environmental, social and economic sectors equally.

## Legislature Focuses in on Second Session

The beginning of the second regular session of the 124<sup>th</sup> Legislature will quickly be upon us.

The Legislative Council met on October 15 to discuss legislator bill requests. In all, approximately one third, around 140, of the bill requests were approved. An appeal date is set for early November where legislators whose bills were denied will have the opportunity to make the case that their bill should be heard this session. The Council is actively watching about 15 bills during this process and will be reporting to the MFPC Technical Committee shortly in an attempt to review various legislation and identify positions.



## Governor Promotes SFI to Green Building Council

In a recent letter to the U.S. Green Building Council dated October 16, Governor Baldacci encourages the organization to ensure that its proposed Forest Certification Benchmark which accommodates all of the major forest certification schemes recognized in the marketplace.

“Maine’s certification efforts recognize the certification programs that are accepted by the market place. In Maine, these include American Tree Farm System, Forest Stewardship Council, Sustainable Forestry Initiative, and, under certain circumstances, wood harvested by loggers certified to the Northeast Master Logger Certification standard (aka Master Loggers),” Governor Baldacci stated in his letter.

There is concern among many leaders in the forest certification community, including Governor Baldacci, that USGBC may have set the bar so high that none of the existing forest certification programs could qualify. Baldacci also goes on to state in his letter that the LEED building standard still does not give adequate

## Complete timberland investment services with one call

Acquisition Due Diligence

Forestland Appraisals

Land Brokerage

Timber Inventory

Certified Forestry

GIS Data & Analysis

**fountains**

[www.fountainsamerica.com](http://www.fountainsamerica.com)

Serving Maine, New Hampshire, Vermont,  
New York and Appalachia

1-866-348-4010



SW-FM/COC-000216

recognition to the use of certified wood, and recommends that USGBC should “fully and amply” recognize the use of certified wood in their rating system.

SFI and MFPC will continue to update members on the progress of this action.

*“Maine’s certification efforts recognize the certification programs that are accepted by the market place. In Maine, these include American Tree Farm System, Forest Stewardship Council, Sustainable Forestry Initiative, and, under certain circumstances, wood harvested by loggers certified to the Northeast Master Logger Certification standard (aka Master Loggers),” Governor Baldacci stated in his letter.*

*Thanks to all the  
Annual Meeting Sponsors*

*Presidents Reception*

*Sponsors*

Huber Resources  
Seven Islands Land Company

*19 Hole Reception*

Berry Dunn McNeil & Parker  
Pierce Atwood

*Breakfast Sponsor*

Verso Paper

*Award Sponsors*

Blanchet Logging & Lumber Co.  
United Insurance  
Eaton Peabody  
Maine Better Transportation Asso.  
S. F. Madden, Inc.  
D. G. Forest Products

*Auction Contributors*

Steve Coleman  
North Maine Woods  
Fred Huntress  
Fountains America  
Peter Triandafillou  
J.W. Sewall  
Berry Dunn McNeil & Parker  
Mike Lane  
Timber Resources  
Lucerne Inn  
Blanchet Logging  
Dysart  
Prentiss & Carlisle  
Begin & Begin  
Robbins Lumber  
Jonathan Cross  
Louisiana Pacific  
Fred Huntress  
Pingree & Seven Islands  
Jim Runyan



**Proudly Serving the Forest Products Industry**

- *Timberland Accounting*
- *Multi-State and International Tax Planning*
- *Business and Property Tax Valuation*
- *Business and Strategic Planning*
- *Financial Forecasts and Projections*
- *Management Information Systems Review*
- *Selection and Implementation*

Lee Chick, CPA – Principal --- [lchick@bdmp.com](mailto:lchick@bdmp.com)  
Renee Bishop, CPA – Principal --- [rbishop@bdmp.com](mailto:rbishop@bdmp.com)  
Jim Maynard, CPA - Principal --- [jmaynard@bdmp.com](mailto:jmaynard@bdmp.com)

100 Middle Street	36 Pleasant Street
PO Box 110	Bangor, ME 04401
Portland, ME 04104-1100	Tel. (207) 942-1600
Tel. (207) 775-2387	Fax (207) 942-9278
Fax (207) 774-2375	

[www.bdmp.com](http://www.bdmp.com)

**Other offices located in Manchester, NH and  
Boston, MA**

**Natural Resources Network  
Prepares for 2010**

The Natural Resources Network, of which MFPC is a founding member, met on October 21 to discuss future plans and strategy. It is apparent that there will be no shortage of issues to work on in the upcoming legislative session and election cycle.

Among the many projects the Network will be undertaking is a commitment to develop relationships with candidates of all political affiliations who are running for governor in 2010. This will be done through a series of informational meetings with the candidates, in which Network members will have the opportunity to offer their thoughts on what natural resource policy should look like under the leadership of the next administration. There will be an opportunity for members of all the organizations to participate in the discussions. For more information on these events, please contact James Cote.

### The Outstanding Logger of Maine Award

(picture left) Eugene Mahar presented the award to Michael Gould of A.S. & C.B. Gould & Son in recognition of continuing exemplary on the ground achievement, customer service, and outstanding safety performance with a demonstrated commitment to workforce education.



### The Outstanding Trucker of Maine

Award (pictures below) Jerry Poulin presented the award to Brian Bouchard of H. O. Bouchard in recognition of outstanding leadership in the forest products industry through operational performance, innovation and unwavering community service during unprecedented challenging times. Jeff Bouchard and Steve Witcomb accepted the award in Brian's absence.



### The Outstanding Manufacturing Award

(pictures below) Brian Savoy presented this year's award to Denis Carrier of Kennebec Lumber Company in recognition of his outstanding achievements in innovations for efficiency in manufacturing and product design of hardwood flooring, in a time of unprecedented market challenges. Jeannot Carrier accepted the award in Dennis's absence.





Bill Vail former Executive Director of the Maine Forest Products Council with his wife presented the Nutting award to John Cashwell

The Maine Forest Products Council established the **Albert D. Nutting Award** in 1990, to commemorate the many contributions to Maine Forestry that Al Nutting was instrumental in creating. He was, of course, the Director of the School of Forest Resources at the University of Maine, Maine Commissioner of Forestry, and, incidentally, one of the Founders of the Maine Forest Products Council. This award has been presented annually since 1990, to a remarkable group of individuals, each one of them truly unique, but with a common commitment to Maine and its forest industry. The award this year was presented to John H. Cashwell, III for his many years of public and private forestry leadership. As Director of the Maine Forest Service and President of Seven Islands Land Company, John helped lead the industry through many tough battles, including Maine's forestry-by-referendum wars of the 1990's. John brought realism and politically palatable solutions to the Maine/Canada border crossing conflicts over the movement of workers and forest products. He foresaw the importance of forestland certification and pioneered its use in Maine. Few individuals command the respect that John has within the forest products industry, the business community and within Maine's state government.



**Abby Holman Public Service Award**

(Picture Left)

This years award was presented to Doreen Sheive by Patrick Strauch, Exec. Director of the Maine Forest Products Council. for her outstanding public service and tireless efforts towards advocat-

ing for the citizens and landowners, as the Fiscal Administrator of Maine's Unorganized Territory.



**Presidents Award** (Picture Above). Brian Flewelling of Key Bank could not make it to the banquet but Doug Denico president of MFPC commented, in his absence, that the success of the Council depends on the voluntary participation of its members and Brian has been a real leader in making our principal fund raiser, the annual summer Golf Tournament, a huge financial success.

## Classified Advertisements

ADVERTISE WITH US!

Size:	Rate: (Member/Non)
Classified	\$ 20/35
Business Card	\$ 65/80
1/4 Page Display	\$110/135
1/2 Page Display	\$190/225
3/4 Page Display	\$250/300
Full Page Display	\$300/360

## Next Month's Newsletter

Regulatory Updates and  
an Election 2010 outlook!

Maine Forest Products Council  
535 Civic Center Drive  
Augusta, Maine 04330